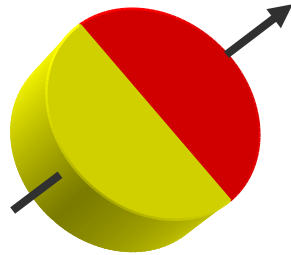


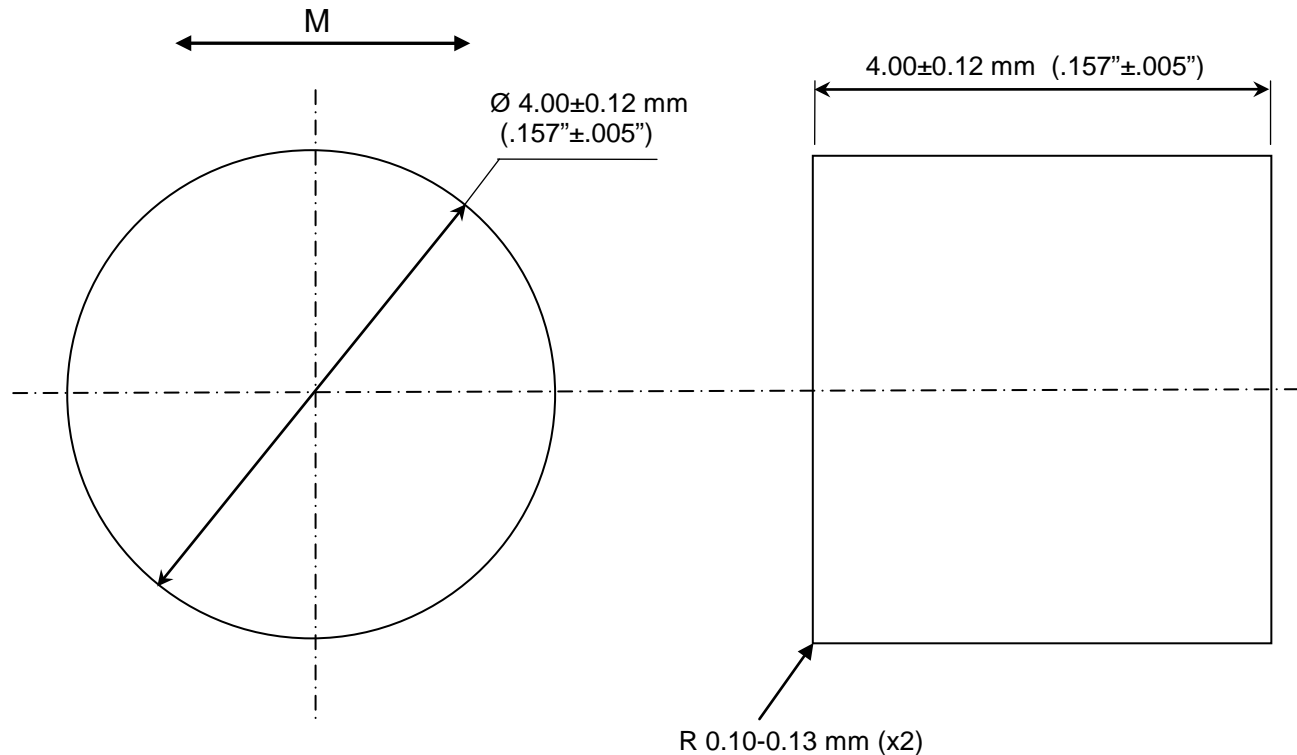
CONFIDENTIAL & PROPRIETARY INFORMATION
 This document contains Confidential and Proprietary Information of Alliance LLC, and all design, manufacturing, reproduction, use, and sale rights of such information are expressly reserved

5 main items all magnet drawings should include:

ALL DIMENSIONS ARE IN MM (INCH)



Indicate the magnetic orientation



NOTES:

- MAGNET PROPERTIES PER N-35SH:
 Br: 11,800-12,200 G
 Hc: 10,800-11,500 Oe
 Hci: ≥20,000 Oe
 T max: 150 C

Magnetic grades are not a worldwide standard, therefore we advise to add the 4 main characteristics: Br, Hc, Hci, BH_{max}

All magnets have a maximum operating temperature

- SUPPLIED MAGNETIZED THROUGH THE DIAMETER **Indicate if they are magnetized or not**
- PARTS ARE NICKEL PLATED FOR 15 HRS SALT SPRAY MIN. **Add plating or coating type**



REV	DESCRIPTION	DATE	BY

TOLERANCES (UNLESS OTHERWISE NOTED)	
DECIMAL	METRIC
X.XX = ± .01	X.X = ± .25
X.XXX = ± .005	X.XX = ± .13
ANGLES ± .5°	
DO NOT SCALE DRAWING	

Alliance LLC		
1450 CLARK DRIVE, VALPARAISO, INDIANA 46385		
DESCRIPTION: 4 mm x 4 mm DISC MAGNET		
SENSOR MAGNET		P/N: ALC4040D
GRADE: N-35SH	Drwg by: BT	REV LEVEL: A
COATING: Nickel	Appr by: DV	Approval: 06-15-2017